



Newsletter October 2009

Merry Christmas and a very happy New Year

May I start by wishing each and every one of you a very good Christmas and a flying start to the New Year. 2010.... I can't believe it. Seems like just yesterday we had the Olympics in Sydney. Of course so many things have happened since then including a global financial crisis which most of us survived with minimum disruption. It has made us more efficient and focussed on product and service. We strongly believe and work to make our products the best in the market. We will return to work on the 6th January. As usual we will make a donation to charity instead of sending Christmas gifts or cards. We make a substantial donation to a charity that supports the needy in our community. This year I have again chosen the Salvos. I do this on behalf of all of us.

What's new.

1) We have printed V2 of our pricelist. It has some minor corrections and I have listed them later in this newsletter under their own heading. Please update your pricelist accordingly.

2) We have made two new four page colour brochures, one for interior and one for exterior products. It is my intention to allow our retail customers to purchase these brochures printed in lots of 100 or 200 with your own name on the back page. Please contact Simon or me for ordering. Estimated cost will be \$300 for 100. This is digitally printed. You will be able to see it on our website.

As an incentive for January, we will print 100 personalised brochures for every \$5000 you spend.

New 62 page brochure.

We have our new 62 page colour brochure on our website. It is in two formats. A fully downloadable PDF and a viewable flip page version. It's one of the best brochures that we have ever seen in this industry. At this time I am not planning to go to hard copy with this brochure. Our website is also constantly being updated.

Quartz ESP.

Please note that Quartz ESP is now called Diamond ESP. This is the fabric we use for the special shapes on page 7 of our pricelist. It is blackout with a heat reflecting pearlised backing. We use it because it has excellent lateral stability. It is now available in white as well as a range of pastel colours.

Custom painting Venetians.

Its worth noting that we are one of the few companies who offer Cedar venetians in custom paint and stains. This applies to 46, 60 and 85mm blade widths.

XL50 pleat sample.

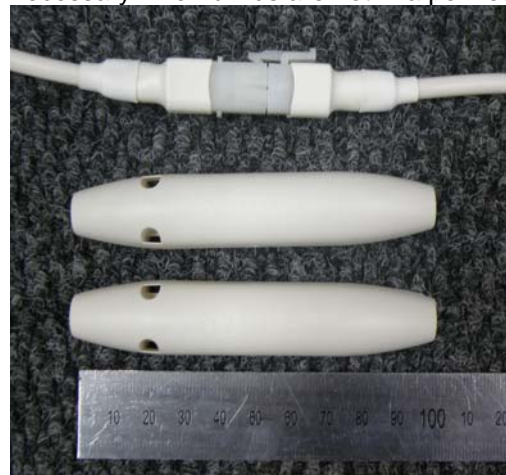
XL50pleat sample sets are now available. This will be the hottest new product in 2010. We also have in stock the primary colours that are featured in our ads but they are not in the sample set. We are able to motorise these as well. **January hand sample offer-Free XL50pleat hand sample with any order in any product over \$2000.**

Interior and exterior work for designers and architects.

We are offering a specialised service to designers and architects for our exterior range of products including aluminium venetians, folding arm awnings, Sundream roof blinds and Vertiscreen straight drop awnings. We do easy and difficult jobs. See our website for some of our offerings.

New inline connector from Somfy.

Somfy have updated their inline connector because of concerns regarding compliance. The cover will become necessary when blinds are not in a pelmet.



2009 Pricelist V2 updates.

We have printed version 2 of our pricelist and listed below are the changes that were made. You can update your current version very easily with the following changes.

- 1) Page 3. Screen Opulence moves to G3 pricing.
- 2) Page 6-point 3. Silent motors. Add \$150 to RTS motor price.
- 3) Page 7-Manual Headbox with side channels. Underneath should read "Price group 3 roller plus cost of 70mm headbox and side channel from bottom of page 5.
- 4) Page 7-Motorised headbox with side channels. Underneath should then read " Plus \$100 and add motor required. Wireless

www.petermeyerblind.com.au
Make this the year you learn about motorisation

Ph 1800 254631



Newsletter October 2009

motors at \$625.00 or \$930 for RTS plus remote would be a price guide"

- 5) Page 8-first group in all groups should be 850mm.
- 6) Page 11. Remove line that says Minimum size 600mm etc. This is not correct . Correct sizes are on page 9.

See next page

- 7) Page 15. Somfy Ultra Silent Motor- Add \$150 to RTS motor.
- 8) Page 16. Under Motorised Romans, Woven timber and Chinois add "40mm Non RTS \$950.00"
Also under Controllers and switches.
 - Inis Uno Hard Wire Switch is \$50
 - Inis Duo Hard Wire Switch is \$70
- Under 4 Channel remote control
Lounge Black should be \$250.00
- 9) Page 25. under point 4-add for pricing refer page 16
- 10) Page 33. "wire side guides "for E2 add \$65.00"
These are standard and included in E1.

We have also added a stack height chart for XL50pleat and a photo of a double bracket on page 34. These photos are available on request and will also be published on our website.

Motoglide and panelglide.

We have released our new panelglide system which features a very simple motorisation add on. Trade clients are welcome to purchase just the track system and supply their own panels, or you can buy the whole system with panels from us. Manual cord or hand draw operation is also available. This is a very smart looking system. This is another exclusive Peter Meyer product.

Bottom up and shapes.

There is a whole page devoted to these in the new pricelist. Please note bottom up requires a special base bar to accommodate the end caps required for the sides. All pulleys on overhead systems are stainless steel.

Signature Collection Update.

Please update your Signature Collection with these upgrades and deletions. It's really important that you keep these up to date please.

Remove:

- Malta blackout and translucent.
- Ara
- Gemma
- Montana
- Sunpro bloc Remove **Slate and White only**

Trade Showroom.

Our Showroom is having a facelift for the New Year. Once it's finished we plan a launch of a number of new products and an open night. Watch this space.

www.petermeyerblind.com.au
Make this the year you learn about motorisation

Ph 1800 254631